



Bush & Co.

23 Primary Court, Cambridge - £1,250 PCM

Well presented, cosy, one bedroom end of terrace house in quiet cul de sac just off Chesterton High Street offering easy access to the City Centre, Science Parks and A14.

Entrance Hall

Living Room

11'8" x 12'7" m (3.56 x 3.84 m)
Living room with laminate flooring

Kitchen

10'3" x 7'10" (3.14 x 2.4m)
Kitchen with gas hob, electric oven, washing machine and fridge
Rear door opening to garden

Bedroom

11'8" x 9'6" m (3.56 x 2.91 m)
Double bedroom with wardrobe
Recently refitted carpet

Bathroom

Bathroom with electric shower over bath

Garden

Sunny enclosed rear paved garden

Key information

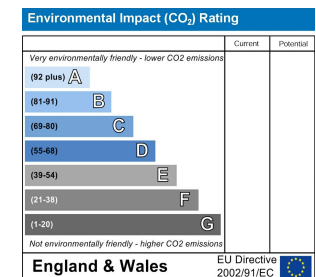
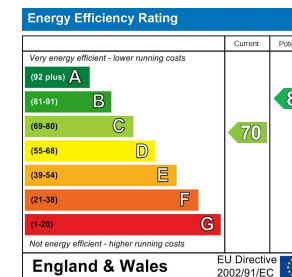
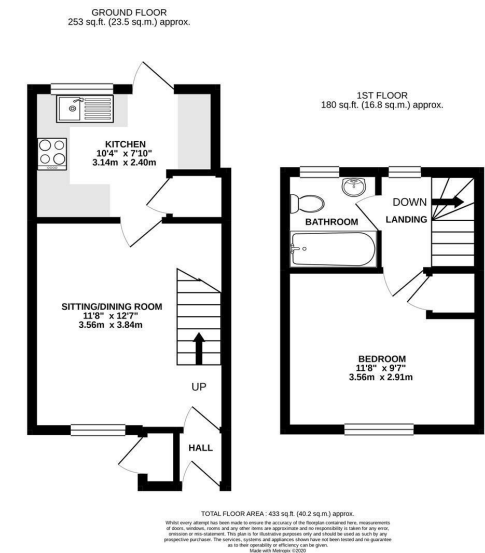
IMPORTANT NOTICE

These particulars, whilst believed to be accurate are set out as a general outline only for guidance and do not constitute any part of an offer or contract. Intending tenants should not rely on them as statements of representation of fact, but must satisfy themselves by inspection or otherwise as to their accuracy. No person in this firm's employment has the authority to make or give any representation or warranty in respect of the property.

Lettings Office:
8 The Broadway, Mill Road, Cambridge CB1 3AH
01223 508085 lettings@bushandco.co.uk

EPC Rating – C
Council Tax Band – B
Rent – £1250 pcm (£288 pw)
Deposit – £1442
Available unfurnished 14th May 2026
Long term tenancy

- Recently redecorated
- Unfurnished
- One Bedroom
- End Terrace House
- Laminate Flooring in Living Room
- Sunny Enclosed Rear Garden
- Gas Central Heating and Double Glazing
- Recently refitted Carpet in the Bedroom
- Off Street Parking Available



Sales Office:
169 Mill Road, Cambridge CB1 3AN
01223 246262 sales@bushandco.co.uk